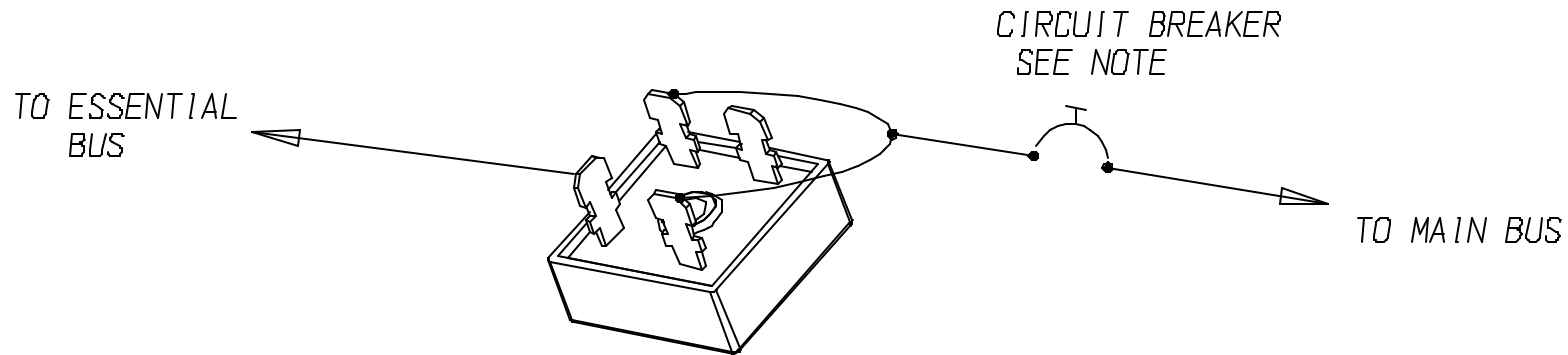


SYMBOL	REVISION	DRAWN	APPROVED



NOTES:

1. BREAKER AND WIRE SIZED TO SUPPORT ESSENTIAL BUS (25 AMP MAX)
2. FOR ESSENTIAL BUS OVER 3 AMPS, MOUNT DIODE ON HEATSINK. HEATSINK MUST DISSIPATE $0.6 \times \text{AMPS} = \text{WATTS}$. EXAMPLE: FOR 20 AMP ESSENTIAL BUS, $0.6 \times 20 = 12$ WATT HEATSINK
3. IF HEATSINK IS USED, APPLY SILICONE HEATSINK COMPOUND BETWEEN DIODE AND HEATSINK
4. MAX MOUNTING SCREW SIZE IS #10

ITEM	-1		PART NO.	DESCRIPTION
	USED ON			
	UNLESS OTHERWISE SPECIFIED			B & C Specialty Products P.O. Box B, Newton, Kansas 67114
	DIMENSIONS ARE IN INCHES TOLERANCES ARE: DECIMAL 0.XX = ± 0.03 DECIMAL 0.XXX = ± 0.005 ANGLES = ± 0.5 DEGREES			
	NAME	DATE	TITLE	INSTALLATION, DIODE
ENGINEER			DRAWING NO.	DIODE
DRAWN	TH	8/26/03	REVISION	
CHECKED			DATE	
PROJECT			SCALE FULL	JOB NO. PAGE 1 OF 1