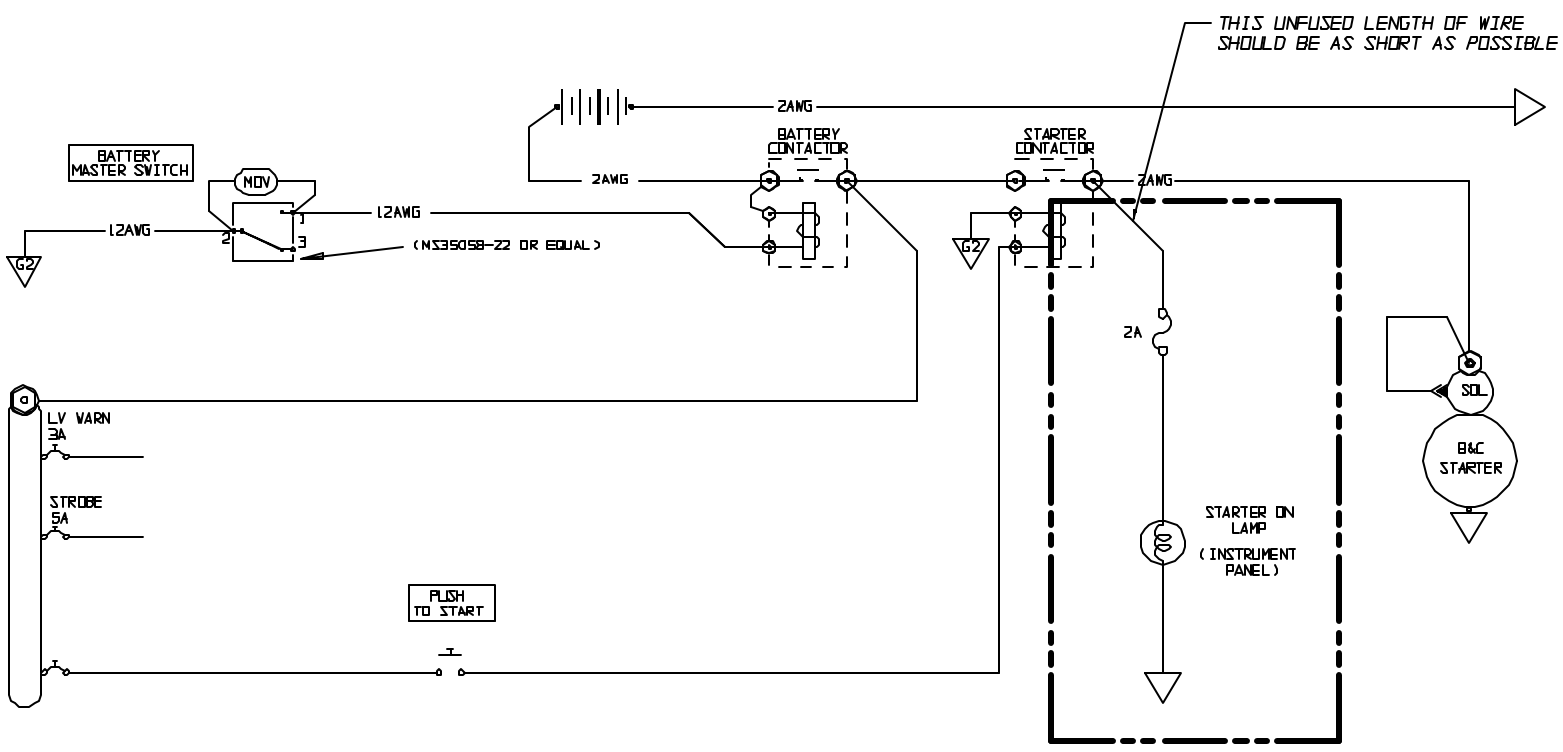


SYMBOL	REVISION	DRAWN	APPROV



NOTES:

1. A "STARTER ON" LAMP IS RECOMMENDED ON ALL STARTER INSTALLATIONS. THE LAMP WILL IDENTIFY A STUCK STARTER CONTACTOR OR START SWITCH BEFORE DAMAGE IS DONE.
2. THE UNFUSED WIRE LENGTH INDICATED IN THE DRAWING SHOULD BE KEPT TO LESS THAN 8 INCHES IF POSSIBLE AND BE TIED AWAY FROM CHAFE POINTS.
3. B & C SPECIALTY PRODUCTS HAS A SUITABLE CLEAR AMBER LAMP THAT CAN BE SEEN IN BRIGHT DAYLIGHT. IT IS AVAILABLE IN 14 OR 28 VOLTS.

ITEM	USED ON	PART NO.	DESCRIPTION
			B & C Specialty Products P.O. Box B, Newton, Kansas 67114
			TITLE SCHEMATIC, STARTER ON LIGHT
	NAME	DATE	
ENGINEER			
DRAWN	TH	12/30/98	DRAWING NO. ON_LITE
CHECKED			REVISION
PROJECT			DATE
	SCALE	FULL	JOB NO.
			PAGE 1 OF 1