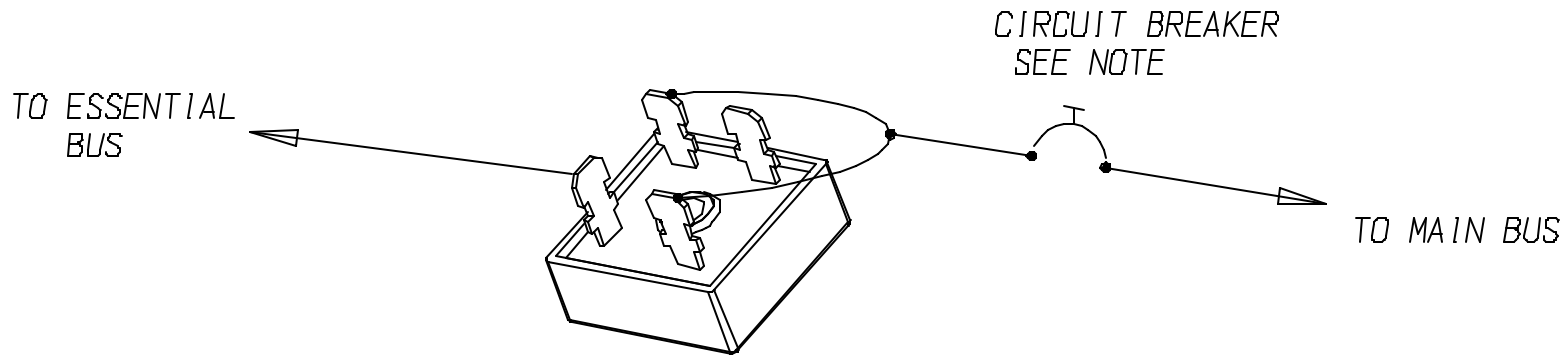


SYMBOL	REVISION	DRAWN	APPROV



NOTES:

1. BREAKER AND WIRE SIZED TO SUPPORT ESSENTIAL BUS (25 AMP MAX)
2. FOR ESSENTIAL BUS OVER 3 AMPS, MOUNT DIODE ON HEATSINK. HEATSINK MUST DISSIPATE  $0.6 \times \text{AMPS} = \text{WATTS}$ . EXAMPLE: FOR 20 AMP ESSENTIAL BUS,  $0.6 \times 20 = 12$  WATT HEATSINK
3. IF HEATSINK IS USED, APPLY SILICONE HEATSINK COMPOUND BETWEEN DIODE AND HEATSINK
4. MAX MOUNTING SCREW SIZE IS #10

ITEM	USED ON	-1	PART NO.	DESCRIPTION
	UNLESS OTHERWISE SPECIFIED			
DIMENSIONS ARE IN INCHES TOLERANCES ARE: DECIMAL 0.XX = $\pm 0.03$ DECIMAL 0.XXX = $\pm 0.005$ ANGLES = $\pm 0.5$ DEGREES			TITLE INSTALLATION, DIODE	
	ENGINEER	NAME	DATE	
	DRAWN	TH	8/26/03	DRAWING NO. DIODE
	CHECKED			REVISION DATE
	PROJECT			SCALE FULL JOB NO. PAGE 1 OF 1