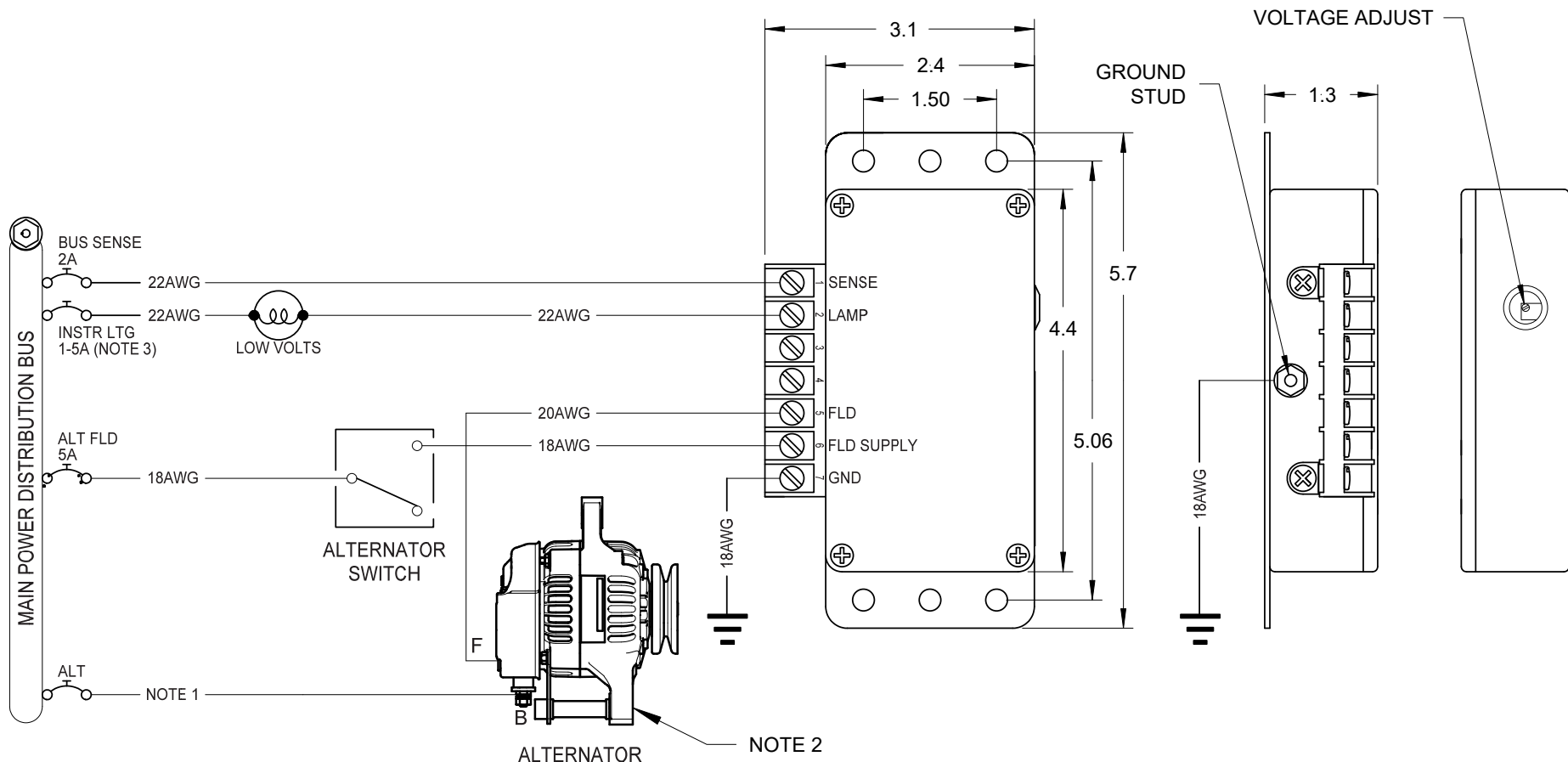


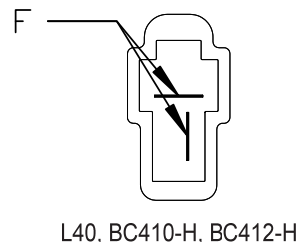
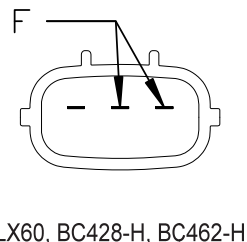
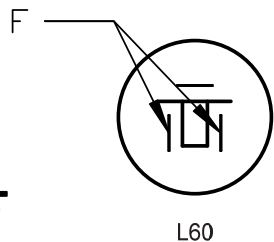
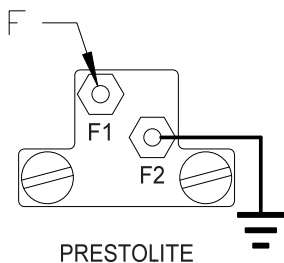
Wiring Diagram for LS1B Voltage Regulator



NOTE 1 - SELECT WIRE AWG PER AC43.13-1B

NOTE 2 - ALTERNATOR GROUNDED THROUGH BRACKET TO ENGINE CASE

NOTE 3 - LOW VOLTS LIGHT MAY BE POWERED BY ANOTHER EXISTING CIRCUIT BREAKER SUCH AS INSTRUMENT LIGHTING, ENGINE INSTRUMENTS, OR SOMETHING ELSE APPROPRIATE.



EXPLANATION OF TERMINALS 1 THRU 7

1. BUS SENSE
2. LOW VOLTAGE WARNING LIGHT
3. OPTIONAL TEMPERATURE PROBE
4. OPTIONAL TEMPERATURE PROBE
5. FIELD
6. BUS - FIELD SUPPLY
7. GROUND

THIS PART IS NOT STC'd OR PMA'd AND IS SOLD FOR EXPERIMENTAL AIRCRAFT ONLY.